



CASE STUDY

Project: Prairie Creek E.S. Tornado



Prairie Creek Elementary School

Kansas has seen an average of **88 tornadoes annually** over the past 30 years, according to the weather service. However, the Sunflower State only recorded 17 in 2020, its lowest annual total in more than 40 years.

Kansas springs often bring the threat of tornadoes. The state averages about 47 tornadoes per year, most of which cause property damage rather than death or injuries.

The chance of being in a tornado or even seeing one is remote. Perhaps it's the rarity that makes tales of encounters so fascinating. Those few eyewitnesses to twisters have dramatic stories to share.



CASE STUDY

Project: Prairie Creek E.S. Tornado

Prairie Creek Elementary School

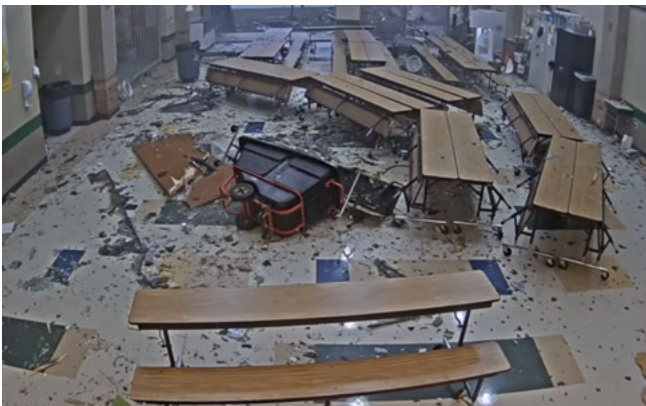
Prairie Creek Elementary is a public school located in Andover, KS, which is in a large suburb setting. The student population of Prairie Creek Elementary is 500 students from Early Learning through 5th grade.



April 29, 2022

The Prairie Creek Elementary was hit by an **EF-3 tornado**, devastating everything in its path.

Surveillance video released by Andover Public Schools on Thursday shows several angles of the damage created as a tornado barreled through town on Friday. The video, nearly four minutes long, offers multiple points of view from outside and inside the building.



You can see the wind pick up single vehicles left in the parking lot and blow them away.

Another camera inside the building shows the storm sweep through the lunchroom blowing around tables and debris, and blowing out the windows



CASE STUDY

Project: Prairie Creek E.S. Tornado



Built for the most severe climate conditions

The REYMSA Cooling Tower in the photo was in the direct path of a 400 yard wide EF-3 tornado with wind speeds of 155 mph. You can see cars and light poles being blown away. The building was so badly damaged that it had to be closed for the rest of the school year. Thankfully, school wasn't in session at the time.

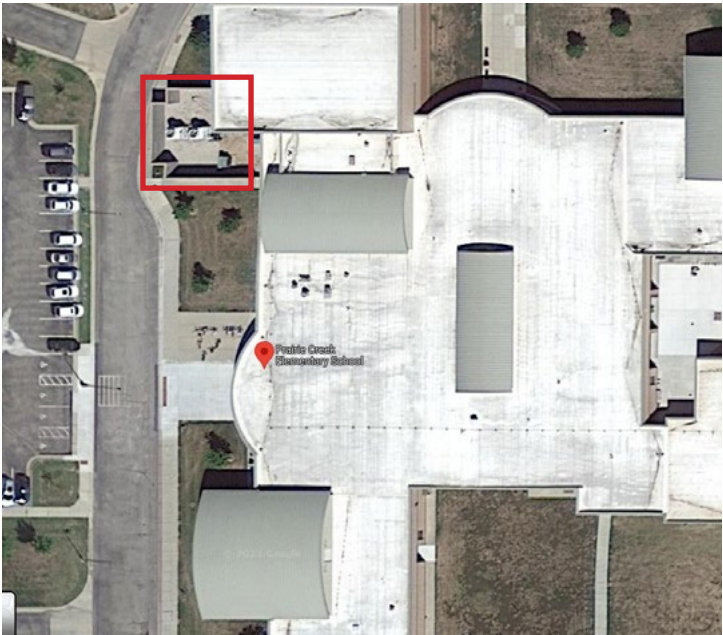
As you can see, the REYMSA cooling tower suffered **NO structural damage**. REYMSA builds in accordance with Miami-Dade wind velocity requirements of 185 mph sustained winds with 225 mph gusts (Cat 5 Hurricane).

*The Structural FRP construction of REYMSA towers allows them to **operate in the most severe climate conditions around the world**, such as desert, coastal and sub-freezing temperatures.*

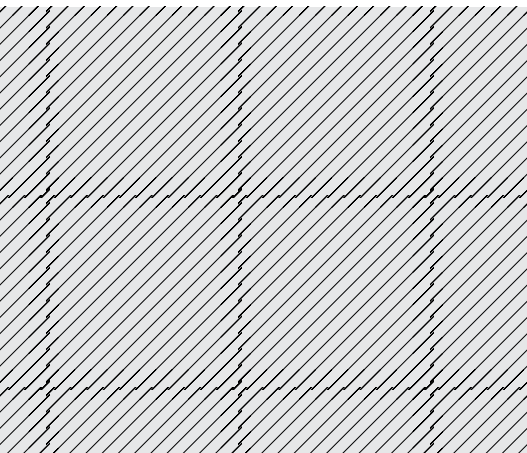


CASE STUDY

Project: Prairie Creek E.S. Tornado



According to the district, there was **\$6 million worth of damage to Prairie Creek**. Roof damage, flooding, shattered windows, and more forced students and staff to say an early goodbye to their building. *Fortunately no one was injured and the REYMSA tower was left standing as proof of its solid construction.*



References:

- <https://www.youtube.com/watch?v=T2Qu7cgwJmw>
- https://www.linkedin.com/posts/markeleypumpguy_awesome-tornado-video-its-gone-viral-activity-6950911825085440000-q_hL?utm_source=share&utm_medium=member_desktop
- <https://www.kmuw.org/2022-05-01/andover-school-to-remain-closed-because-of-tornado-damage>

Project: Prairie Creek Elementary School

Location: Andover, Kansas.

Tower Model: (2) HRF-606105